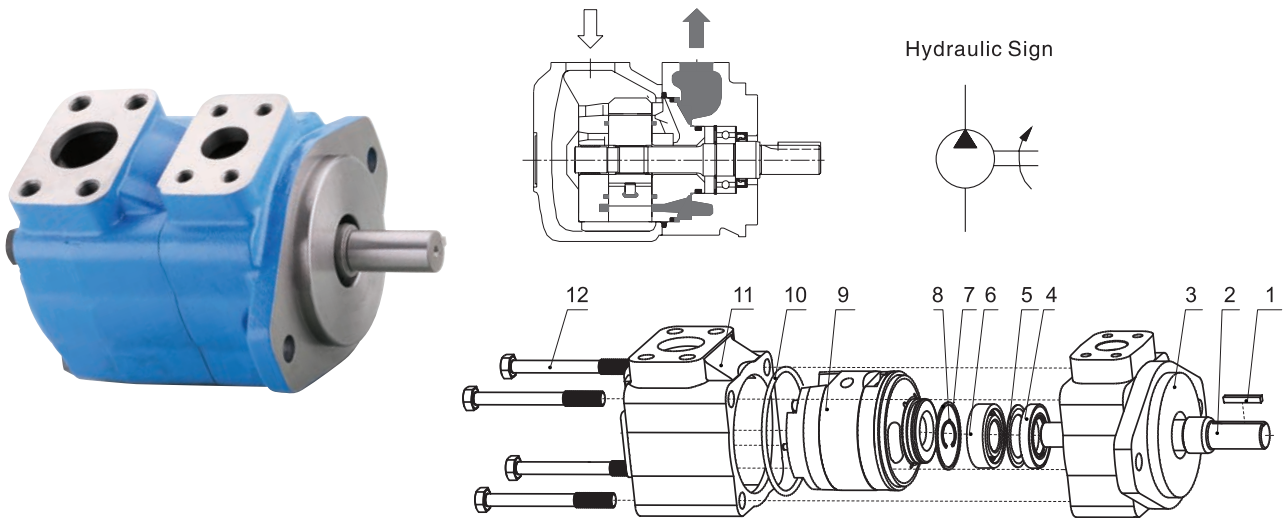


## V Series-single pumps



NO.	Part	Qty	NO.	Part	Qty	NO.	Part	Qty
1	Straight Key	1	5	Gasket	1	9	Cartridge	1
2	Shaft	1	6	Ball Bearing	1	10	O Ring	1
3	Front Cover	1	7	Pile Type Retainer	1	11	Rear Cover	1
4	Shaft Seal	1	8	Cir Clip For Shaft	1	12	Hexagon Headed Bolt	4

High Performance Intravane Pumps for plastic injection machinery, Shoe machinery, Tool machinery, Die casting machinery and Metallurge equipment.

### Features

1. Intravane pumps with hydraulic balancing structure provide more stable performance and longer life since less pressure from vane on stator.
2. Twelve vane system provide low amplitude flow pulsation resulting in low system noise characteristics.
3. Various displacement and shafts with 4 different outlet opposite position make operation more flexible.
4. The cartridge is independent of the drive shaft, allowing for easy servicing without remove the pump from its mounting.

## Model Designation

(F3-)	25V	19	A	-1	A	22	R
Note	Series	Displacement	Port connections	Shaft type	Outlet Positions	Design number	Rotation
No-marking: Petroleum series oil emulsification fluid water glycol-fluid F3: phosphate ester fluid	20V	2、3、4、5、6、7、8、9、10、11、12、14	A-SAE A-SAE 4-bolt flange	1-Str key 151-Spline	(Viewed from cover end of pump) A-Opposite inlet B-90° CCW from inlet C-Inline with inlet D-90° CW from inlet	22	(Viewed form shaft end of pump) L- Left hand for counter clockwise R-Right hand for clockwise
	25V	10、12、14、15、17、19、21、25		1-Str key 86-HD Str key 11-Spline			
	35V	21、25、30、32、35、38、45					
	45V	42、45、50、57、60、66、75					

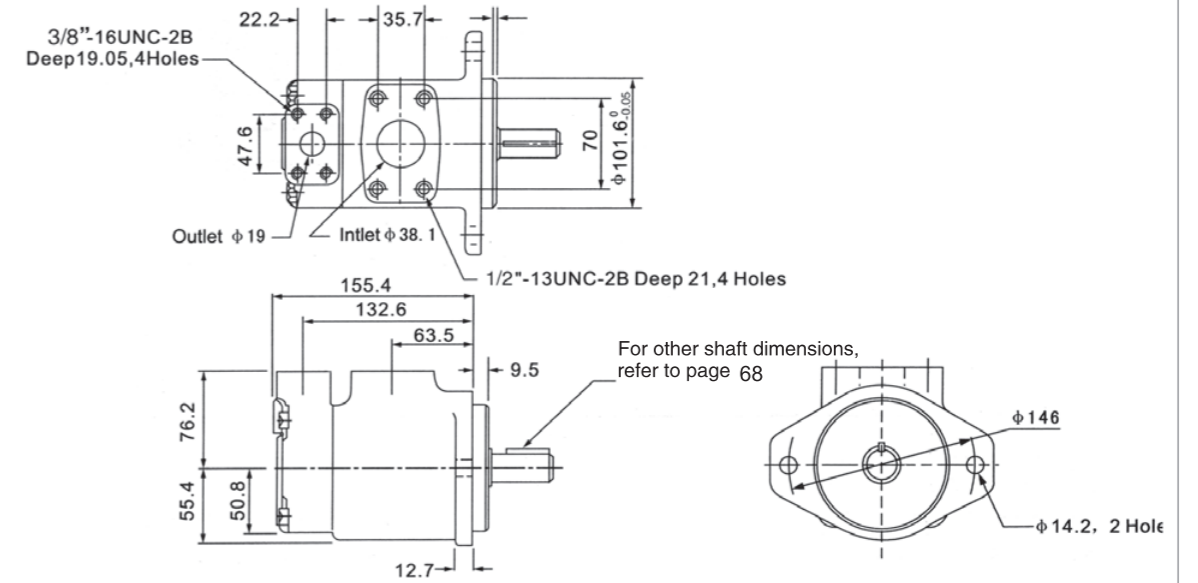
▽ USgpm Flow(USgpm)at 1200r/min and 0.69MPa

**Technical Data**

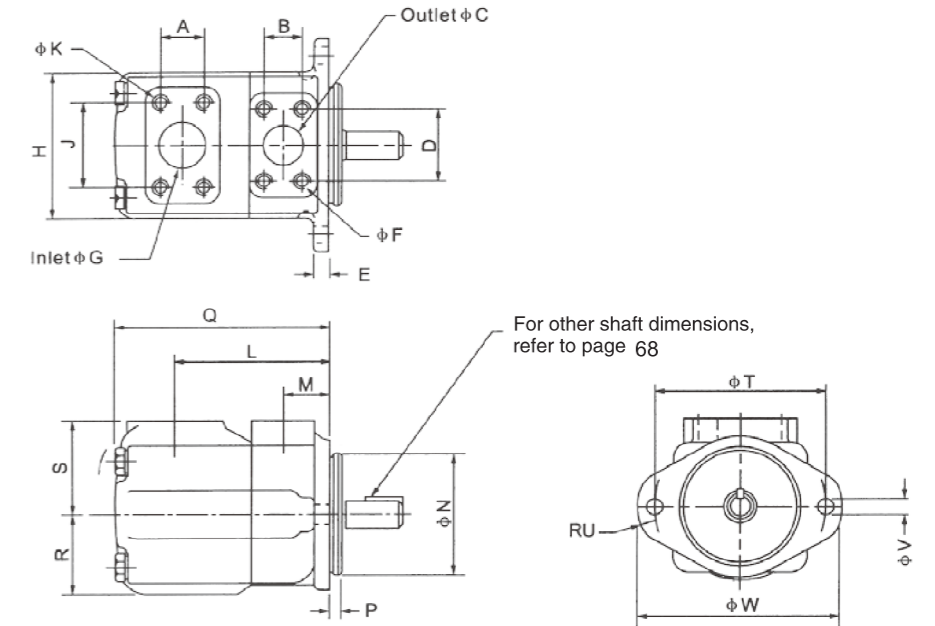
Series	Flow code (USgpm)	Geometric displacement mL/r(in <sup>3</sup> /r)	With antiwear hydraulic oil or phosphate ester fluid		With water glycol fluid		With water-oil emulsions		Min.speed
			Max.operating pressure MPa	Max.speed r/min	Max.operating pressure MPa	Max.speed r/min	Max.operating pressure MPa	Max.speed r/min	
20V	2	7.5(0.46)	13.8	1800	13.8	1500	6.9	1200	600
	3	10(0.61)							
	4	13(0.79)							
	5	16.5(1.01)							
	6	19(1.16)							
	7	23(1.40)							
	8	27(1.67)							
	9	30(1.85)							
	10	32(1.95)							
	11	36(2.20)							
	12	40(2.44)	15.9						
	14	45(2.78)							
	25V	10	32.5(1.98)		17.2				
		12	39(2.38)						
14		45(2.78)							
15		47(2.89)							
17		55(3.36)							
19		60(3.66)							
21		67(4.13)							
35V	21	67(4.13)	17.2	1800	15.9	1500	6.9	1500	600
	25	81(4.94)							
	30	97(5.91)							
	32	101(6.16)							
	35	112(6.83)							
	38	121(7.37)							
45V	42	138(8.41)	17.2	1800	15.9	1500	6.9	1500	600
	45	147(8.95)							
	50	162(9.85)							
	57	181(11.05)							
	60	193(11.75)							
	66	212(12.93)							
	75	237(14.46)	13.8						

**Installation Dimensions**

**20V**



**25V,35V,45V**



Model	A	B	ØC	D	E	ØG	H	J	L	M	N	P	Q	R
25V	35.7	26.2	25.4	52.4	12.7	38.1	118	69.9	121	38.1	101.60/101.55	9.53	162.1	63.5
35V	42.9	30.2	31.8	58.7	16	50.8	140	77.8	125.5	38.1	127.00/126.95	9.53	185	69.9
45V	61.9	35.7	38.1	69.9	16	76.2	159	106.4	153	43	127.00/126/95	12.7	216	82.6
Model	S	T	RU	ØV	W	ØX	ØF×full thread depth, 4 holes				ØK×full thread depth, 4 holes			
25V	76.2	146	14	14.2	175	121	3/8-16UNC-2BX19.1				1/2-13UNC-2BX23.8			
35V	82.6	181	16	17.5	213	148	7/16-14UNC-2BX22.3				1/2-13UNC-2BX22.3			
45V	93.7	181	16	17.5	213	148	1/2-13UNC-2BX23.8				5/8-11UNC-2BX25.4			