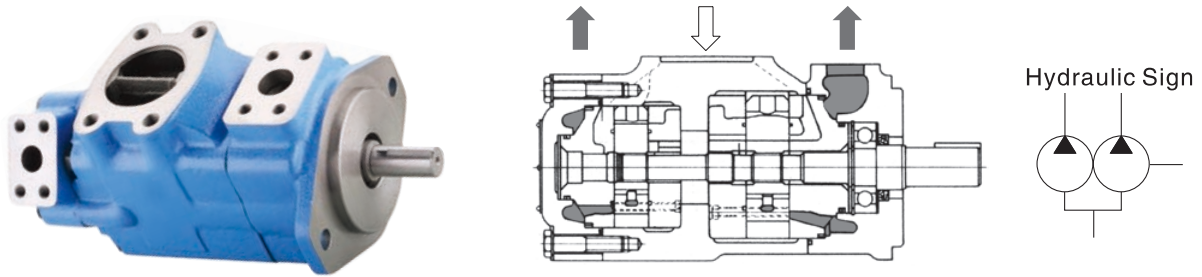


V Series-Double pumps



Model Designation

(F3-)	3525V	38	A	17	-1	AB	22	R
Note	Series	▼ Flow-Shaft end pump	Port connection	▼ Flow-cover end pump	Shaft type	Outlet Positions	Design number	Rotation
No-marking: Petroleum series oil emulsification fluid water glycol-fluid F3: phosphate ester fluid	2520V	10、12、14、15、17、19、21、25	A-SAE A-SAE 4-bolt flange	2、3、4、5、6、7、8、9、10、11、12、14	1-Str key 86-HD Str key 11-Spline	See below	22	(Views from shaft end of pump) R- Right hand for clockwise L- Left hand for counter clockwise
	3520V	21、25、30、32、35、38、45		2、3、4、5、6、7、8、9、10、11、12、14				
	3525V	21、25、30、32、35、38、45		10、12、14、15、17、19、21、25				
	4520V	42、45、50、57、60、66、75		2、3、4、5、6、7、8、9、10、11、12、14				
	4525V	42、45、50、57、60、66、75		10、12、14、15、17、19、21、25				
4535V	42、45、50、57、60、66、75	21、25、30、32、35、38、45、						

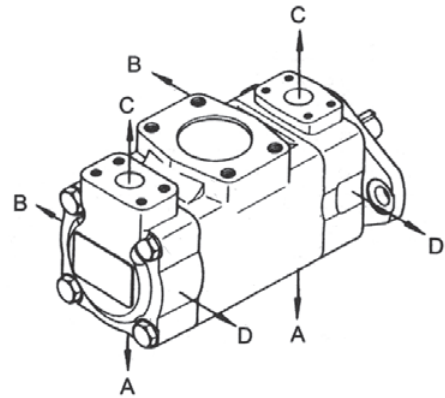
▽ Usqpm Flow (USqpm) at 1200r/min and 0.69MPa

Outlet Positions(Viewed from cover end of pump)

Outlet positions		All series except 4535V	4535V
No.1 outlet opposite inlet	AA	No.2 outlet 135° CCW from inlet	No.2 outlet opposite inlet
	AB	No.2 outlet 45° CCW from inlet	No.2 outlet 90° CCW from inlet
	AC	No.2 outlet 45° CW from inlet	No.2 outlet inline with inlet
	AD	No.2 outlet 135° CW from inlet	No.2 outlet 90° CW from inlet
No.1 outlet 90° CCW from inlet	BA	No.2 outlet 135° CCW from inlet	No.2 outlet opposite inlet
	BB	No.2 outlet 45° CCW from inlet	No.2 outlet 90° CCW from inlet
	BC	No.2 outlet 45° CW from inlet	No.2 outlet inline with inlet
	BD	No.2 outlet 135° CW from inlet	No.2 outlet 90° CW from inlet

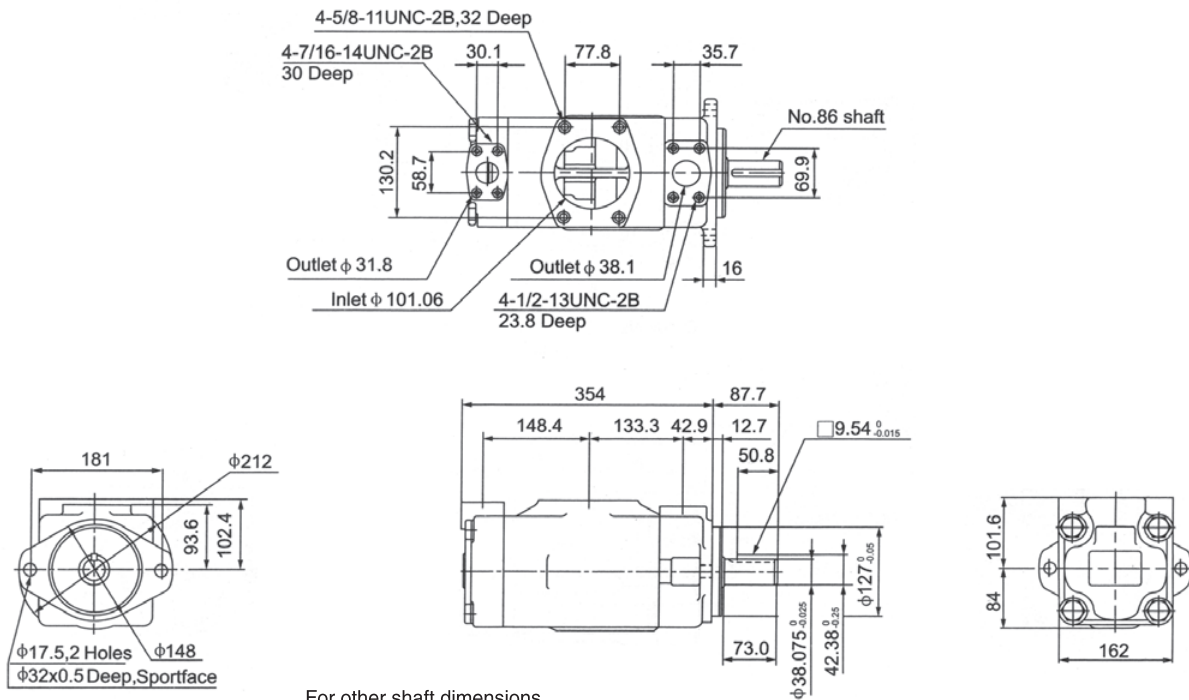
Outlet Positions (Viewed from cover end of pump)

Outlet positions		All series except 4535V	4535V
No.1 outlet inline with inlet	CA	No.2 outlet 135° CCW from inlet	No.2 outlet opposite inlet
	CB	No.2 outlet 45° CCW from inlet	No.2 outlet 90° CCW from inlet
	CC	No.2 outlet 45° CW from inlet	No.2 outlet inline with inlet
	CD	No.2 outlet 135° CW from inlet	No.2 outlet 90° CW from inlet
No.1 outlet 90° CW from inlet	DA	No.2 outlet 135° CCW from inlet	No.2 outlet opposite inlet
	DB	No.2 outlet 45° CCW from inlet	No.2 outlet 90° CCW from inlet
	DC	No.2 outlet 45° CW from inlet	No.2 outlet inline with inlet
	DD	No.2 outlet 135° CW from inlet	No.2 outlet 90° CW from inlet



Installation Dimensions

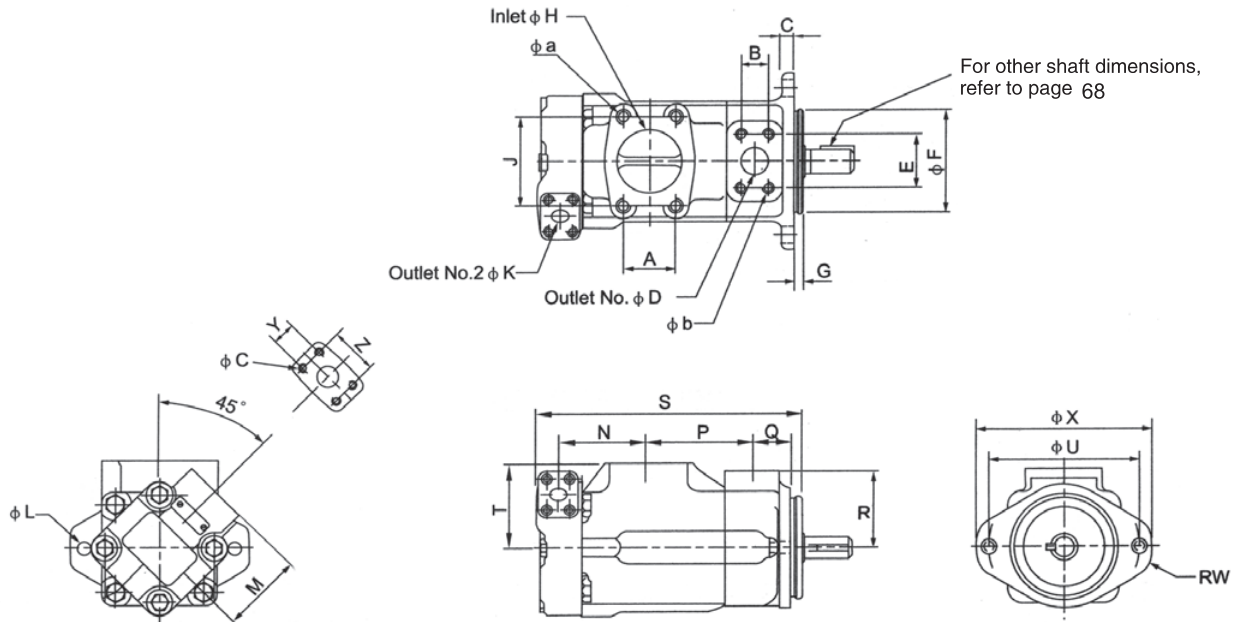
4535V



For other shaft dimensions, refer to page 68

Installation Dimensions

2520V、3520V、3525V、4520V、4525V



Model	Øa x full thread depth,4 holes	Øb x full thread depth,4 holes	Øc x full thread depth,4 holes
2520V	1/2-13UNC-2Bx23.8	3/8-16UNC-2Bx19.1	3/8-16UNC-2Bx19.1
3520V	5/8-11UNC-2Bx30.0	7/16-14UNC-2Bx22.3	3/8-16UNC-2Bx19.1
3525V	5/8-11UNC-2Bx30.0	7/16-14UNC-2Bx22.3	3/8-16UNC-2Bx19.1
4520V	5/8-11UNC-2Bx30.0	1/2-13UNC-2Bx23.8	3/8-16UNC-2Bx19.1
4525V	5/8-11UNC-2Bx30.0	1/2-13UNC-2Bx23.8	3/8-16UNC-2Bx19.1

Model	A	B	C	ØD	E	ØF	G	ØH	J	ØK	ØL	M
2520V	50.8	26.2	12.7	25.4	52.4	101.60/101.55	9.53	63.5	88.9	19.1	14.2	76.2
3520V	62	30.1	15.9	31.7	58.7	127.00/126.95	9.53	76.2	106.3	19.1	17.5	76.2
3525V	62	30.1	15.9	31.7	58.7	127.00/126.95	9.53	76.2	106.3	25.4	17.5	74.7
4520V	69.9	35.7	15.9	38.1	69.9	127.00/126.95	12.7	88.9	120.6	19.1	17.5	76.2
4525V	69.9	35.7	15.9	38.1	69.9	127.00/126.95	12.7	88.9	120.6	25.4	17.5	74.7

Model	N	P	Q	R	S	T	ØU	ØV	RW	ØX	Y	Z
2520V	88.1	101.6	38.1	76.2	250	85.3	146.1	120.7	14	174.7	22.2	47.6
3520V	99.6	114.3	38.1	82.6	273.3	88.9	181	148	16	213	22.2	47.6
3525V	109.5	114.3	38.1	82.6	287.3	88.9	181	148	16	213	26.2	52.4
4520V	120	119.4	42.9	93.7	303.5	102.4	181	148	16	213	22.2	47.6
4525V	136	119.4	42.9	93.7	325	102.4	181	148	16	213	26.2	52.4