

Gear Pumps - Galtech



Group 1 'Start' Pumps

- Each individual pump is preset for rear connection to one or more pumps by the interposition of the appropriate coupling flange.
- Euro-mount 71.9 mm x 52 mm rectangular, spigot \varnothing 25.4 mm, 1:8 taper shaft.

Model	Displacement <i>cc/rev</i>	Max. Pressure <i>bar</i>	Max. Speed <i>rpm</i>	List
1SP-A-0.9-D-10NN*	0.89	240	6000	\$ 300.00
1SP-A-1.2-D-10NN*	1.18	240	6000	\$ 300.00
1SP-A-1.6-D-10NN*	1.6	240	6000	\$ 300.00
1SP-A-2.0-D-10NN*	2.0	220	5500	\$ 300.00
1SP-A-2.5-D-10NN*	2.5	220	5000	\$ 305.00
1SP-A-3.2-D-10NN*	3.2	210	4500	\$ 305.00
1SP-A-3.7-D-10NN*	3.7	210	4000	\$ 305.00
1SP-A-4.2-D-10NN*	4.2	190	3500	\$ 305.00
1SP-A-5.0-D-10NN*	5.0	180	3000	\$ 315.00
1SP-A-6.3-D-10NN*	6.3	170	2700	\$ 315.00
1SP-A-7.8-D-10NN*	7.76	170	2500	\$ 325.00

- Pumps can be supplied in either clockwise or anti-clockwise rotation.

Configuration Options		List Adder
Port type	Flanged ports - NN	N/C
	BSPB Threaded ports - GG	N/C
Shaft type	1:8 Taper shaft - 10	N/C
	1/2" Parallel keyed shaft - 13	N/C
Mounting flange type	Standard Euro-mount 71.9 mm x 52 mm rectangle	N/C
	SAE 'A-A' Two bolt mount	\$ 35.00
* Relief valve	Integral relief valve built into the rear cover, internal exhaust - VLPI	\$ 160.00

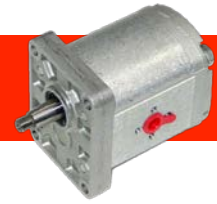
Accessories		List
FG 3/8-26	Outlet flange, 90° elbow, 3/8" BSP, 26 PCD (<i>0.9 – 2.0 pumps</i>)	\$ 29.00
FG 3/8-30	Outlet flange, 90° elbow, 3/8" BSP, 30 PCD	\$ 29.00
FG 1/2-30	Inlet and outlet flange, 90° elbow, 1/2" BSP, 30 PCD	\$ 29.00
FI 30-3/8-Z-C	Inlet and outlet flange, straight port, 3/8" BSP, 30 PCD	\$ 64.00

Pump Joiner Kits

Model	Description	List
01091100000000	Group 1 with Group 1 Start	\$ 180.00
01092110000000	Group 2 with Group 1 Start	\$ 180.00
01092200000000	Group 2 with Group 2 Start	\$ 200.00
01093110000000	Group 3 with Group 1 Start	\$ 275.00
01093200000000	Group 3 with Group 2 Start	\$ 310.00
01093300000000	Group 3 with Group 3 Start	\$ 330.00
01091101000000	Group 1 with Group 1 Short tandem (TC)	\$ 180.00
01092201000000	Group 2 with Group 2 Short tandem (TC)	\$ 200.00
01093101000000	Group 3 with Group 1 Short tandem (TC)	\$ 275.00
01093211000000	Group 3 with Group 2 Short tandem (TC)	\$ 310.00
01093310000000	Group 3 with Group 3 Short tandem (TC)	\$ 330.00



Gear Pumps - Galtech



Group 2 'Start' Pumps

- 12 tooth gears and consequent decrease in noise levels.
- High working pressures.
- Flange and cover in aluminium or on request, cast iron.
- Each individual pump is preset for rear connection to one or more pumps by interposition of the appropriate coupling flange.
- Euro-mount 96.2 mm x 71.5 mm rectangular, spigot Ø36.5 mm, 1:8 taper shaft.

Model	Displacement cc/rev	Max. Pressure bar	Max. Speed rpm	List
2SP-A-04-10N*	4.0	250	4000	\$ 448.00
2SP-A-06-10N*	6.0	250	4000	\$ 448.00
2SP-A-08-10N*	8.5	250	3500	\$ 448.00
2SP-A-11-10N*	11.0	250	3500	\$ 465.00
2SP-A-14-10N*	14.0	250	3500	\$ 465.00
2SP-A-16-10N*	16.5	230	3500	\$ 465.00
2SP-A-19-10N*	19.5	210	3300	\$ 475.00
2SP-A-22-10N*	22.5	190	2800	\$ 475.00
2SP-A-26-10N*	26.0	170	2500	\$ 485.00

- Pumps can be supplied in either clockwise or anti-clockwise rotation.
- Pumps are available with cast iron end plates for higher working pressures – *Consult Hyspecs*

Configuration Options	List Adder	
Port type	Flanged ports - N BSP Threaded ports - G UNO Threaded Ports- U	N/C N/C N/C
Shaft type	1:8 Taper shaft - 10 5/8" Parallel keyed shaft - 13 5/8" 9 Tooth spline - 14 10 Tooth spine - 14* - available in 8,11 and 26cc pumps only	N/C N/C N/C N/C
Mounting flange type	Standard Euro-mount 96.2 mm x 71.5 mm rectangle SAE 'A' Two bolt mount	N/C \$ 35.00
* Relief valve	Integral relief valve built into the rear cover, internal exhaust - VLPI	\$ 190.00

Accessories	List	
FG 3/8-30	Outlet flange, 90° elbow, 3/8" BSP, 30 PCD	\$ 29.00
FG 1/2-30	Inlet & Outlet flange, 90° elbow, 1/2" BSP, 30 PCD	\$ 29.00
FG 1/2-40	Inlet & Outlet flange, 90° elbow, 1/2" BSP, 40 PCD	\$ 55.00
FG 3/4-40	Inlet flange, 90° elbow, 3/4" BSP, 40 PCD	\$ 39.00
FI 30-3/8-Z-C	Outlet flange, straight port, 3/8" BSP, 30 PCD	\$ 64.00
FI 40-1/2-Z-C	Outlet flange, straight port, 1/2" BSP, 40 PCD	\$ 83.00
015290030000000	Front Euro-mount kit with bearing for shaft side loading	\$ 185.00

Gear Pumps - Galtech



Group 3 'Start' Pumps

- 12 tooth gears & consequent decrease in noise levels.
- High working pressures
- Flange and cover in aluminium or on request, cast iron.
- Each individual pump is preset for rear connection to one or more pumps by interposition of the appropriate coupling flange.
- Euro-mount 128 mm x 98 mm rectangular, spigot $\varnothing 50.8$ mm, 1:8 taper shaft.

Model	Displacement <i>cc/rev</i>	Max. Pressure <i>bar</i>	Max. Speed <i>rpm</i>	List
3SP-A-19-10N*	19.0	250	3500	\$ 890.00
3SP-A-22-10N*	22.3	240	3500	\$ 890.00
3SP-A-29-10N*	29.3	220	3300	\$ 925.00
3SP-A-33-10N*	32.9	220	3300	\$ 925.00
3SP-A-36-10N*	36.4	210	3300	\$ 925.00
3SP-A-44-10N*	43.5	200	3000	\$ 945.00
3SP-A-52-10N*	51.7	200	3000	\$ 945.00
3SP-A-62-10N*	61.1	180	2500	\$ 990.00

- Pumps can be supplied in either clockwise or anti-clockwise rotation.
- Pumps are available with cast iron end plates for higher working pressures – *Consult Hyspecs*

Configuration Options	List Adder	
Port type	Flanged ports - N	N/C
	BSPP Threaded Ports - G	N/C
Shaft type	1:8 Taper shaft - 10	N/C
	7/8" Parallel keyed shaft - 13	N/C
	7/8" 13 Tooth spline - 14	N/C
Mounting flange type	Standard Euro-mount 128 mm x 98 mm rectangle	N/C
	SAE 'B' Two bolt mount	\$ 45.00
* Relief valve	Integral relief valve built into the rear cover, internal exhaust - VLPI	\$ 220.00

Accessories	List	
FG 1/2-40	Inlet & Outlet flange, 90° elbow, 1/2" BSP, 40 PCD	\$ 55.00
FG 3/4-40	Outlet flange, 90° elbow, 3/4" BSP, 40 PCD	\$ 39.00
FG 1-51	Inlet flange, 90° elbow, 1" BSP, 51 PCD	\$ 64.00
FI 40-1/2-Z-C	Outlet flange, straight port, 1/2" BSP, 40 PCD	\$ 83.00

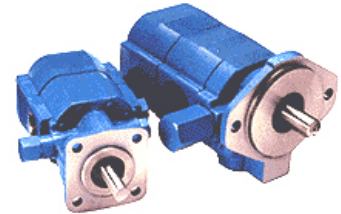
Gear Pumps - Haldex Hydraulics



W1500

- High performance gear pump with low noise and excellent high & low speed operation. High strength aluminium with cast iron end plates.
- SAE 'B', 2-bolt, 7/8" 13T shaft, 1 5/8" UNO suction port, 1 5/16" UNO pressure port.

Model	Displacement <i>cc/rev</i>	Max. Pressure <i>bar</i>	Max. Speed <i>rpm</i>	List
1303259	38	275	3000	\$ 1203.00
1303261	44	220	2800	\$ 1266.00
1303263	50	200	2700	\$ 1329.00



2 Stage High/Low Gear Pumps

- Haldex 2 volume High/Low hydraulic pumps are compact, two stage, external gear pumps designed for use at elevated pressures. They are ideal for press-type applications requiring fast approach/retract speeds and slower peak actuator work speeds because of horsepower limitations or safety constraints.

Model	Displacement		Max. Pressure <i>bar</i>	Max. Speed <i>rpm</i>	List
	High Pressure Gear Displ. <i>cc/rev</i>	Low Pressure Gear Displ. <i>cc/rev</i>			
1300484	1.1	6.4	207	4000	\$ 460.00
1300485	3.2	6.4	207	4000	\$ 460.00
1300159	3.2	8.5	207	4000	\$ 440.00
1300487	4.2	12.7	207	4000	\$ 440.00
1300488	7.6	15.2	207	4000	\$ 1050.00
1300489	7.6	22.9	207	4000	\$ 1085.00

- Unloaded adjustment 27-62 bar on all pumps except the 1300488 and 1300489, which is 27-48 bar.
- NB: **Add** sizes together for maximum low pressure flow.
- Pressures and speeds shown are maximums.

Vane Pumps – Eaton/Vickers



V10 & V20 Series

- Fixed displacement balanced vane pump. Single or double pumps.

Single Pumps

Model	Displacement <i>cc/rev</i>	Max. Speed <i>rpm</i>	Max. Pressure <i>bar</i>	List
V10	3.3	4800	172	\$ 856.00
V10	6.6	4500	172	\$ 856.00
V10	9.8	4000	172	\$ 856.00
V10	13.1	3400	172	\$ 856.00
V10	16.4	3200	172	\$ 856.00
V10	19.5	3000	152	\$ 856.00
V10	22.8	2800	138	\$ 856.00
V20	16.4	3400	172	\$ 1096.00
V20	19.5	3000	172	\$ 1096.00
V20	22.8	2800	172	\$ 1096.00
V20	26.5	2800	172	\$ 1096.00
V20	29.7	2800	172	\$ 1096.00
V20	36.4	2500	172	\$ 1096.00
V20	39.0	2400	152	\$ 1096.00
V20	42.5	2400	152	\$ 1096.00

- V10 has 1 5/16" UNO suction and 3/4" UNO pressure ports, SAE A mount
- V20 has 1 5/8" UNO suction and 1 1/16" UNO pressure ports, SAE A mount

Double Pumps

Model	Displacement Shaft End <i>cc/rev</i>	Displacement Rear Cover End <i>cc/rev</i>	Max. Speed <i>rpm</i>	Max. Pressure <i>bar</i>	List
V2010	19.5	3.3	3000	172	\$ 2687.00
V2010	22.8	6.6	3000	172	\$ 2687.00
V2010	26.5	9.8	2800	172	\$ 2687.00
V2010	29.6	13.1	2800	172	\$ 2687.00
V2010	36.4	16.4	2500	172	\$ 2687.00
V2010	39.0	19.5	2400	152	\$ 2687.00
V2010	42.5	22.8	2400	152	\$ 2687.00
V2020	19.5	19.5	3000	172	\$ 2978.00
V2020	22.8	22.8	3000	172	\$ 2978.00
V2020	26.5	26.5	2800	172	\$ 2978.00
V2020	29.6	29.6	2800	172	\$ 2978.00
V2020	36.4	36.4	2500	172	\$ 2978.00
V2020	39.0	36.4	2400	152	\$ 2978.00
V2020	42.5	36.4	2400	152	\$ 2978.00

- V10 has 1 5/16" UNO suction and 3/4" UNO pressure ports, SAE A mount.
- V20 has 1 5/8" UNO suction and 1 1/16" UNO pressure ports, SAE A mount.

Vane Pumps – Eaton/Vickers



V10 & V20 Series (continued)

Configuration Options – Single Pumps	List Adder
3/4" Straight keyed shaft	N/C
5/8" 9T shaft	N/C
3/4" 11T shaft (V20 only)	N/C
Flow control head – V10	\$ 340.00
Priority head – V10	\$ 554.00
Flow control head – V20	\$ 320.00
Priority head – V20	\$ 487.00

- For flow rate and relief valve settings please *contact Hyspecs*.

VQ & VQ(T) Series

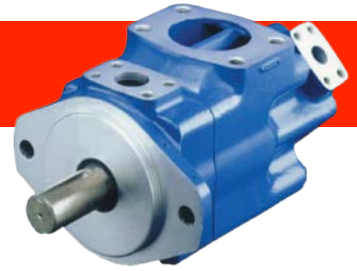
- Fixed displacement high speed, pressure balanced vane pump.
- Single or double pumps, through drive option



Single Pumps - VQ

Model	Displacement Cc/Rev	Max. Speed rpm	Max. Pressure bar	Pressure Port Code 61	Suction Port Code 61	Mount	List
20VQ	6.6	2700	210	3/4"	1 1/2"	SAE B	\$ 2079.00
20VQ	18	2700	210	3/4"	1 1/2"	SAE B	\$ 2079.00
20VQ	19	2700	210	3/4"	1 1/2"	SAE B	\$ 2079.00
20VQ	27	2700	210	3/4"	1 1/2"	SAE B	\$ 2079.00
20VQ	29	2700	210	3/4"	1 1/2"	SAE B	\$ 2079.00
20VQ	35	2700	210	3/4"	1 1/2"	SAE B	\$ 2079.00
20VQ	40	2700	158	3/4"	1 1/2"	SAE B	\$ 2079.00
20VQ	45	2700	138	3/4"	1 1/2"	SAE B	\$ 2079.00
25VQ	40	2700	210	1"	1 1/2"	SAE B	\$ 1879.00
25VQ	45	2700	210	1"	1 1/2"	SAE B	\$ 1879.00
25VQ	55	2500	210	1"	1 1/2"	SAE B	\$ 1879.00
25VQ	62	2500	210	1"	1 1/2"	SAE B	\$ 1879.00
25VQ	68	2500	210	1"	1 1/2"	SAE B	\$ 1879.00

Vane Pumps – Eaton/Vickers



Single Pumps – VQ (continued)

Model	Displacement cc/rev	Max. Speed rpm	Max. Pressure bar	Pressure Port Code 61	Suction Port Code 61	Mount	List
35VQ	68	2500	210	1 1/4"	2"	SAE C	\$ 2621.00
35VQ	82	2500	210	1 1/4"	2"	SAE C	\$ 2621.00
35VQ	98	2500	210	1 1/4"	2"	SAE C	\$ 2621.00
35VQ	113	2400	210	1 1/4"	2"	SAE C	\$ 2621.00
35VQ	122	2400	210	1 1/4"	2"	SAE C	\$ 2621.00
<i>Code 62</i>							
45VQ	139	2200	172	1 1/2"	3"	SAE C	\$ 4296.00
45VQ	155	2200	172	1 1/2"	3"	SAE C	\$ 4296.00
45VQ	162	2200	172	1 1/2"	3"	SAE C	\$ 4296.00
45VQ	188	2200	172	1 1/2"	3"	SAE C	\$ 4296.00
45VQ	193	2200	172	1 1/2"	3"	SAE C	\$ 4296.00

Configuration Options	List Adder
7/8" straight keyed or 7/8" 13T shaft - 20VQ, 25VQ, 30VQ	N/C
1 1/4" straight keyed or 1 1/4" 14T shaft - 35VQ, 45VQ	N/C

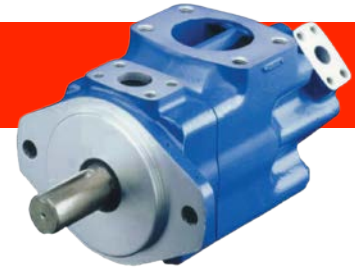
Single Pumps – VQT

- Single vane pump with through drive option.

Model	Rear Mount	Displacement cc/rev	Max. Speed rpm	Shaft	Max Input Torque* Nm	Max Rear Torque Nm	List
25VQT	SAE A	All sizes as per 25VQ	As per 25VQ	1" straight	400	131	\$ 2896.00
	SAE B			7/8" 13T		316	
35VQT	SAE A	All sizes as per 35VQ	As per 35VQ	1 3/8" straight	659	131	\$ 4035.00
	SAE B			1 1/4" 14T		348	
	SAE C					437	
45VQT	SAE A	All sizes as per 45VQ	As per 45VQ	1 1/2" straight	810	131	\$ 4731.00
	SAE B			1 1/4" 14T		384	
	SAE C					1017	

* Input torque is a combination of front and back units on VQT.

Vane Pumps – Eaton/Vickers



Double Pumps – VQ

- Double vane pump, single inlet

Model	Displacement cc/rev		Max Rpm rpm	Max. Pressure bar	Pressure Port	Suction Port Code 61	Mount	List
	Front	Rear						
2520VQ	40	18	All 2700 except 55cc & 68cc max 2500	As per 20VQ & 25VQ except rear cartridge 40cc = 158 45cc = 138	As per 20VQ & 25VQ	2 1/2"	SAE B	\$ 4091.00
2520VQ	45	27				2 1/2"	SAE B	\$ 4091.00
2520VQ	55	35				2 1/2"	SAE B	\$ 4091.00
2520VQ	61	40				2 1/2"	SAE B	\$ 4091.00
2520VQ	68	45				2 1/2"	SAE B	\$ 4091.00
3520VQ	82	18	All 2500 except 113cc & 122cc max 2400	As per 20VQ & 35VQ except rear cartridge 40cc = 158 45cc = 138	As per 20VQ & 35VQ	3"	SAE C	\$ 5050.00
3520VQ	98	27				3"	SAE C	\$ 5050.00
3520VQ	113	35				3"	SAE C	\$ 5050.00
3520VQ	122	40				3"	SAE C	\$ 5050.00
3520VQ	-	45				3"	SAE C	\$ 5050.00
4520VQ	139	18	All 2200	As per 20VQ & 45VQ except rear cartridge 40cc = 158 45cc = 138	As per 20VQ & 45VQ	3 1/2"	SAE C	\$ 5970.00
4520VQ	155	27				3 1/2"	SAE C	\$ 5970.00
4520VQ	162	35				3 1/2"	SAE C	\$ 5970.00
4520VQ	188	40				3 1/2"	SAE C	\$ 5970.00
4520VQ	193	45				3 1/2"	SAE C	\$ 5970.00
3525VQ	68	-	All 2700 except 113cc & 122cc max 2400	As per 35VQ & 25VQ	As per 35VQ & 25VQ	3"	SAE C	\$ 5505.00
3525VQ	82	40				3"	SAE C	\$ 5505.00
3525VQ	98	45				3"	SAE C	\$ 5505.00
3525VQ	113	55				3"	SAE C	\$ 5505.00
3525VQ	122	68				3"	SAE C	\$ 5505.00
4525VQ	139	40	All 2200	As per 45VQ & 25VQ	As per 45VQ & 25VQ	3 1/2"	SAE C	\$ 6786.00
4525VQ	155	45				3 1/2"	SAE C	\$ 6786.00
4525VQ	162	55				3 1/2"	SAE C	\$ 6786.00
4525VQ	188	68				3 1/2"	SAE C	\$ 6786.00
4525VQ	193	-				3 1/2"	SAE C	\$ 6786.00
4535VQ	139	82	All 2200	As per 45VQ & 35VQ	As per 45VQ & 35VQ	4"	SAE C	\$ 7136.00
4535VQ	155	98				4"	SAE C	\$ 7136.00
4535VQ	162	113				4"	SAE C	\$ 7136.00
4535VQ	188	122				4"	SAE C	\$ 7136.00
4535VQ	193	-				4"	SAE C	\$ 7136.00

Configuration Options

7/8" straight keyed or 7/8" 13T shaft – 2520VQ

1 1/4" straight keyed or 1 1/4" 14T shaft – 3520VQ, 4520VQ, 3525VQ, 4525VQ, 4535VQ

List Adder

N/C

N/C

Hand Pumps - Galtech



CS Series – Double Acting With Relief

Model	Displacement <i>cc/rev</i>	Max. Pressure <i>bar</i>	Reservoir <i>litre</i>	List
CSN25VS-4-1-1	25	350	1	\$ 755.00
CSN25VS-4-2-1	25	350	2	\$ 790.00
CSN25VS-4-3-1	25	350	3	\$ 825.00
CSN25VS-4-5-1	25	350	5	\$ 860.00
CSN45VS-4-1-1	45	280	1	\$ 770.00
CSN45VS-4-2-1	45	280	2	\$ 805.00
CSN45VS-4-3-1	45	280	3	\$ 840.00
CSN45VS-4-5-1	45	280	5	\$ 875.00

CSI Series – Double Acting, Flow Reverser And Relief

Model	Displacement <i>cc/rev</i>	Max. Pressure <i>bar</i>	Reservoir <i>litre</i>	List
CSIN12VS-4-1-1	12	380	1	\$ 549.00
CSIN12VS-4-2-1	12	380	2	\$ 835.00
CSIN12VS-4-3-1	12	380	3	\$ 870.00
CSIN12VS-4-5-1	12	380	5	\$ 905.00
CSIN25VS-4-1-1	25	350	1	\$ 835.00
CSIN25VS-4-2-1	25	350	2	\$ 870.00
CSIN25VS-4-3-1	25	350	3	\$ 905.00
CSIN25VS-4-5-1	25	350	5	\$ 940.00
CSIN25VS-4-10-1	25	350	10	\$ 1020.00
CSIN45VS-4-1-1	45	280	1	\$ 870.00
CSIN45VS-4-2-1	45	280	2	\$ 905.00
CSIN45VS-4-3-1	45	280	3	\$ 940.00
CSIN45VS-4-5-1	45	280	5	\$ 975.00
CSIN45VS-4-10-1	45	280	10	\$ 975.00



IS Series – Single Action, No Reservoir

Model	Displacement <i>cc/rev</i>	Max. Pressure <i>bar</i>	List
IS-6	20	250	\$ 485.00
IS-7	30	200	\$ 485.00

Part	Description	List
IS6-S/K	IS-6 Seal kit	\$ 57.00
IS7-S/K	IS-7 Seal kit	\$ 61.00

Hand Pumps - Hydraforce



HP Series – Single Action, No Reservoir

Model	Description	Displacement <i>cc/rev</i>	Max. Pressure <i>bar</i>	List
HP10-20D/T-0-N	Cartridge	1.36	207	\$ 350.00
HP10-21A-0-N-A	Cartridge	7.4	207	\$ 315.00
6502340	Handle	-	-	\$ 46.00
HS1020P8	1/2" BSPP Manifold	-	207	\$ 86.00

Model	Description	Displacement <i>cc/rev</i>	Max. Pressure <i>bar</i>	List
HP16-21A-0-N	Cartridge	21.32	207	\$ 424.00
6502340	Handle	-	-	\$ 46.00
HS1620P12	3/4" BSPP Manifold	-	207	\$ 189.00

HP Hydraforce Hand Pump

Description

- A screw-in, cartridge-style, push or pull type hand pump with two built-in checks

Features

- Hardened parts for long life.
- Handle Beam rotates 360°
- Push or pull linkage standard.
- Heavy-duty construction.
- Industry common cavity.
- Displacement up to 10.6 cc (0.65 cu in.) per stroke

Piston Pumps - Press./ Press. Flow Compensated - Eaton



420 Series

- Maximize power density with the small but powerful 420 series pumps from Eaton. Ideal solutions for applications with constrained space, 420 Series pumps are available with displacements ranging from 41 cc to 80 cc.

Max Displacement	cc/rev	41.0**	49.2	62.3	80.0
Max. Speed	rpm	2650	2650	2600	2200
Flow	lpm	104	126	156	166
Cont. Pressure	bar	280	280	280	210
Max. Int. Pressure	bar	320	320	320	-
Max. Input Power*	kW	50.9	61.1	75.9	-
Cont. Inlet Temp	°C	82	82	82	82
Mounting Flange		2 Bolt SAE B	2 Bolt SAE B	2 Bolt SAE B	2 Bolt SAE B or C

* @ max continuous flow and max. continuous pressure

**Available on indent order only

Model	Description	List
ADU041	41cc/rev, SAEB 2-bolt mount, Ø 7/8" 13T splined shaft, rear ports	\$ 3773.00
ADU049	49cc/rev, SAEB 2-bolt mount, Ø 7/8" 13T splined shaft, rear ports	\$ 3559.00
ADU062	62cc/rev, SAEB 2-bolt mount, Ø 1" 15T splined shaft, rear ports	\$ 4300.00
ADU080	80cc/rev, SAEB 2-bolt mount, Ø 1" 15T splined shaft, side ports	\$ 4600.00

Configuration Options		
9900194-003	Seal kit	\$ 147.00
9900194-004	Adjustable maximum displacement stop kit	\$ 222.00

NOTE: Shaft, mount, displacement and control options are available on request – *Consult Hyspecs*

420 Series

Features

- Pressure compensated or load sense
- Small, space-saving size fits into more system applications
- Minimal number of separate parts reduces service needs

Applications

- Tele handlers, Backhoe Loaders, Skid Steer and more

Piston Pumps - Press./ Press. Flow Compensated - Eaton



PVH Series - Mobile

- Get the power of Eaton technology—including their precision manufacturing and proven inline piston design—in a small, light and quiet package: the PVH Series. Optimized for up to 250 bar, high flow, continuous duty applications on mobile equipment, PVH Series pumps are perfect for equipment like skid steer loaders, boom lifts and more.

Max Displacement	cc/rev	57	74	98	131
Max. Speed	rpm	3000	2750	2600	2500
Max. Flow**	lpm	134	156	202	249
Press. Δbar	bar	250	250	250	250
Cont. Inlet Temp	°C	82	82	82	82
Mounting Flange		4 Bolt SAE C	4 Bolt SAE C	4 Bolt SAE C	4 Bolt SAE C

** @ max continuous flow and max. continuous pressure

57cc – 131cc are priced as standard with through shaft and SAE A rear mount.

Model	Description	List
PVH – 57 cc	57 cc/rev, SAE C four bolt mount, through drive with SAE A pad Ø 1 1/4" 14T splined shaft, side ports, press./ flow compensated,	\$ 6246.00
PVH – 74 cc	74 cc/rev, SAE C four bolt mount, through drive with SAE A pad Ø 1 1/4" 14T splined shaft, side ports, press./ flow compensated,	\$ 7447.00
PVH – 98 cc	98 cc/rev, SAE C four bolt mount, through drive with SAE A pad Ø 1 1/2" 17T splined shaft, side ports, press./ flow compensated,	\$ 8717.00
PVH – 131 cc	131 cc/rev, SAE C four bolt mount, through drive with SAE A pad Ø 1 1/2" 17T splined shaft, side ports, press./ flow compensated,	\$ 11227.00

NOTE: Shaft, mount, displacement and control options are available on request – *Consult Hyspecs*

PVH Series

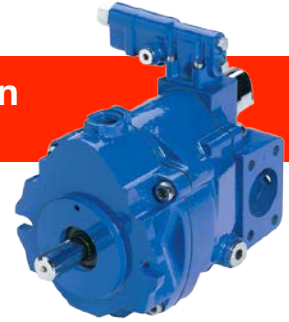
Features

- Full range of controls and multiple shaft and mounting options increase flexibility of possible applications
- Durable construction promotes maximum operational reliability
- Small, lightweight design reduces noise for sensitive applications

Applications

- Skid Steer Loader, Boom lifts, Machine Tool, Plastics, Construction and more

Piston Pumps - Press./ Press. Flow Compensated - Eaton



PVM Series – Industrial Pumps

- Press brakes, injecting molding machines, extruders—many kinds of applications that require a wide displacement range all benefit from Eaton PVM Series piston pumps. With a variable displacement from 18 cc to 141 cc (1.1 to 8.6 cu in) at operating pressures up to 280 bar (4,061 psi) and host of advanced features, the PVM Series piston pump reduces noise levels by more than 50% for quiet, effective operation.

Max Displacement	cc/rev	18.0*	45.1*	57.4*	73.7*	98.3*	131.0*
Max. Speed	rpm	1800	1800	1800	1800	1800	1800
Max. Flow**	lpm	31	76	102	127	170	215
Press. Δbar	bar	280	280	280	280	280	280
Max Case Press	bar	0.5	0.5	0.5	0.5	0.5	0.5
Input Power**	kW	16	41	52	63	88	113
Cont. Inlet Temp	°C	82	82	82	82	82	82
Mounting Flange		2 Bolt SAE A	2 Bolt SAE B	4 Bolt SAE C	4 Bolt SAE C	4 Bolt SAE C	4 Bolt SAE C

* **NOTE:** 10% higher displacements are available at reduced operating pressures - *Consult Hyspecs*

** @ 210 bar and 1800 rpm

57cc – 131cc are priced as standard with through shaft and SAE A rear mount.
Standard build includes industrial ER plate with right hand rotation.

Model	Description	List
PVM – 18 cc	18 cc/rev, SAE A two bolt mount, Ø 5/8" parallel shaft, side ports, press./ flow compensated.	\$ 3819.00
PVM – 45 cc	45 cc/rev, SAE B two bolt mount, Ø 7/8" parallel shaft, side ports, press./ flow compensated.	\$ 5346.00
PVM – 57 cc	57 cc/rev, SAE C four bolt mount, through drive with SAE A pad Ø 1 1/4" parallel shaft, side ports, press./ flow compensated,	\$ 6775.00
PVM – 74 cc	74 cc/rev, SAE CC four bolt mount, through drive with SAE A pad Ø 1 1/2" parallel shaft, side ports, press./ flow compensated,	\$ 8078.00
PVM – 98 cc	98 cc/rev, SAE CC four bolt mount, through drive with SAE A pad Ø 1 1/2" parallel shaft, side ports, press./ flow compensated,	\$ 9455.00
PVM – 131 cc	131 cc/rev, SAE CC four bolt mount, through drive with SAE A pad Ø 1 1/2" parallel shaft, side ports, press./ flow compensated,	\$ 12177.00

Configuration Options

Through shaft kits - (18 to 45 cc)

NOTE: Shaft, mount, displacement and control options are available on request – *Consult Hyspecs*

Piston Pumps - Closed Loop Medium Duty – Poclain Hydraulics



PM10 Series

- PM10 is a variable displacement, axial piston pump, with swashplate system, for closed loop hydrostatic transmissions. It provides a continuously variable flow rate between zero and maximum in forward and reverse direction. Flow rate is proportional to rotation speed and swashplate angle.

Model		PM10-09	PM10-14	PM10-21
Max. Displacement	cc/rev	9.08	14.32	20.40
Max. Flow	lpm	32.7	51.6	73
Rated Speed	rpm	3600	3600	3600
Rated Pressure	bar	210	210	210
Max. Pressure	bar	350	350	350
Max. Absorbed Power	KW	19.1	30.1	42.6
Continuous Pressure	bar	1.5	1.5	1.5

Model	Description	List
PM10-09	Single pump, 9.08 cc, SAE A or SAE B mount, splined shaft	\$ 3850.00
	Direct mechanical control	
	Charge pump	
	SAE A auxiliary mounting pad	
PM10-14	Single pump, 14.32 cc, SAE A or SAE B mount, splined shaft	\$ 3930.00
	Direct mechanical control	
	Charge pump	
	SAE A auxiliary mounting pad	
PM10-21	Single pump, 20.40 cc, SAE A or SAE B mount, splined shaft	\$ 4140.00
	Direct mechanical control	
	Charge pump	
	SAE A auxiliary mounting pad	

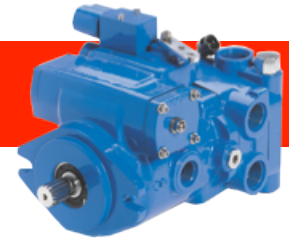
Configuration Options - Numerous other configuration options are available on request:

- Mechanical servo control
- Hydraulic servo control
- Hydraulic automotive control
- Electrical on-off control
- Electro-proportional control
- Pumps can also be configured to double pump with auxiliary mount

PM10 Series - Features

- Variable displacement
- For closed loop circuits
- Rugged and compact
- Integral charge pump
- Tandem mounting available
- Mounting flange: SAE A, SAE B, SAE BB

Piston Pumps - Closed Loop Medium Duty - Eaton



72400 Series

- Sometimes bigger isn't better—but having the perfect fit for the application is. Rated for operating at pressures up to 380 bar (5,500 psi) while powered by engines of less than 82 kW (110 hp), Eaton medium-duty pumps offer the perfect middle ground solution for a variety of applications.

Model		72400	72400
Max Displacement	cc/rev	40.6	49.2
Max. Speed	rpm	3600	3600
Max. Flow*	lpm	140	169
Press. Δbar	bar	207	207
Max Case Pressure	bar	1.7	1.7
Max. R/V setting	bar	345	286
Charge Pressure	bar	17 – 21	17 – 21
Input Power*	kW	49	60

* @ max continuous speed and max. continuous pressure. N.B. Auxiliary cooling is recommended.

Model	Description	List
72400-XXX	Single pump, SAE B two bolt mount. Ø 1" 15T splined input shaft, 6.9 cc charge pump. SAE A pad 5/8" 9T input for auxiliary pump on rear. Manual control arm.	\$ 4975.00
72400-XXX	Front tandem pump, SAE B two bolt mount. Ø 1" 15T splined input shaft. Configured to accept rear tandem pump. Manual control arm. It does not include a charge pump.	\$ 4816.00
72400-XXX	Rear tandem pump, SAE B two bolt mount. 41T splined input shaft. Configured to accept front tandem pump. Manual control arm. Includes a 13.8 cc charge pump.	\$ 5238.00

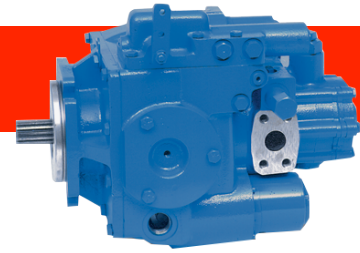
Configuration Options

49.2cc Displacement option.
1" Keyed input shaft (PV & TF)
13T splined input shaft (PV)
Tow valve.
High pressure relief valves (172 - 345 bar @ 35 bar increments)
Hydraulic remote control.
Electronic proportional displacement control.
Neutral lockout switch.
Neutral detent.
Destroke valve.
Tandem mounting kit, 72400-902
Cover plate for SAE A flange (Aux. pump not used), 70142-915

72400 Series Features

- Self-lubricating, sealed systems are more responsive and easier to operate
- Infinitely variable input speeds—from zero to maximum, in both forward and reverse
- Fluid-linked system, hydrostatic braking
- Transfers power to remote locations without a mechanical power train
- Optimizes engine power and performance depending on the load conditions
- Permits smaller service brakes for more cost-effective vehicle maintenance

Piston Pumps - Closed Loop Heavy Duty - Eaton



HD Series

Model		39	46	54	64	76
Displacement	cc/rev	63.7	75.3	89.1	105.5	124.8
Max. Speed @ 18° Cam Angle***	rpm	4160	4160	3720	3720	2775
Max. Flow	lpm	255	300	318	375	333
Input Torque*	Nm	265	315	371	441	514
Press. Δbar	bar	241	241	241	241	241

* Input torque @ 241 bar

** At 15° swash angle

*** Max. pump speed may be limited by the charge pump speed rating.

- Pump performance calculated @ 96% efficiency.

Model	Displacement cc/rev	List
3923-XXX	63.7	\$ 8997.00
4623-XXX	75.3	\$ 9477.00
5423-XXX	89.1	\$ 10486.00
6423-XXX	105.5	\$ 11696.00
7620-XXX	124.8	\$ 13536.00

Above Pricing Includes;

- Manual controller, 13.8 cc charge pump
- Code 61, 1" SAE main ports

XXX - Identifies specific unit configuration - *Consult Hyspecs*

- **N.B. Auxiliary cooling is recommended**

Configuration Options
Spline, taper, and parallel keyed shaft versions available
21 cc charge pump - (except 64-76)
28 cc charge pump - (33-54)
35 cc charge pump - (64-76)
SAE A pad auxiliary mount.
SAE B pad auxiliary mount.
SAE C pad auxiliary mount.
Neutral detent
Neutral lockout
Electro-proportional control
Hydraulic remote
Inching valve
Internal pressure over-ride
Pressure over-ride
Remote pressure over-ride
Anti-stall with destroke valve
External servo stop adjustment
Stroke Limiter
Tachometric auto displacement control

HD Series

Features

- Self-lubricating, sealed systems are more responsive and easier to operate
- Infinitely variable input speeds—from zero to maximum, in both forward and reverse
- Fluid-linked system, hydrostatic braking
- Transfers power to remote locations without a mechanical power train
- Optimizes engine power and performance depending on the load conditions
- Permits smaller service brakes for more cost-effective vehicle maintenance

Applications

- Combines, transit mixer drum drives, timber harvesters, construction equipment, farm tractors, sawmills, mining equipment and many other applications.